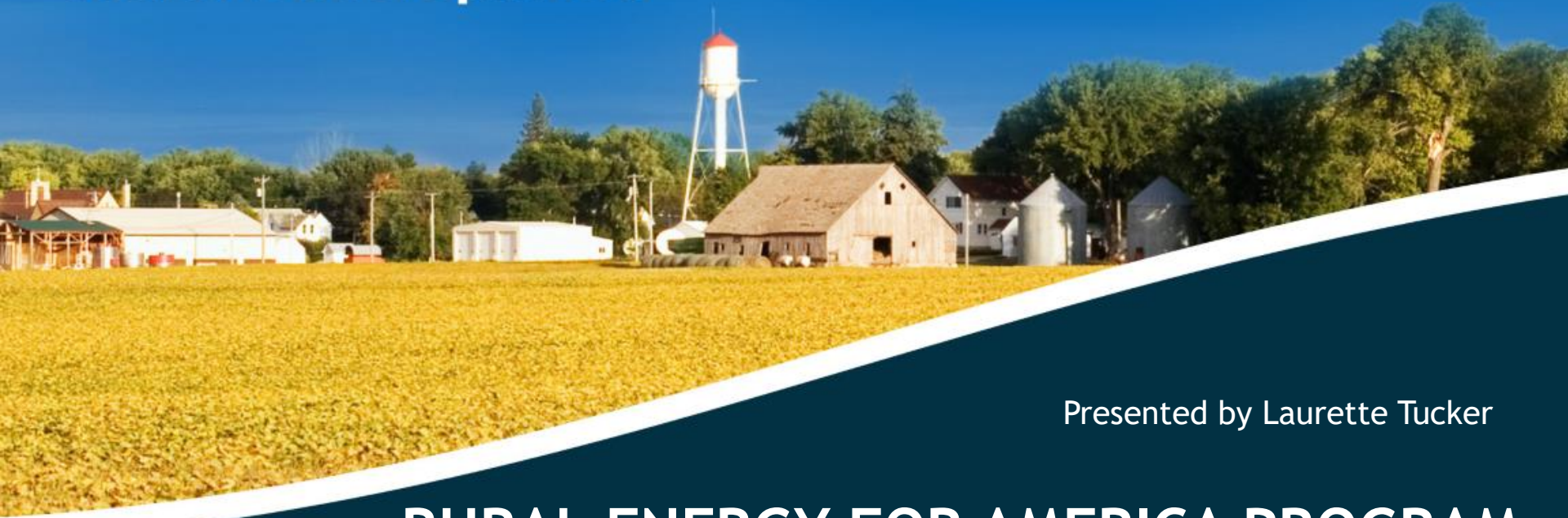




United States
Department of
Agriculture

Rural Development



Presented by Laurette Tucker

RURAL ENERGY FOR AMERICA PROGRAM















Rural Business and Cooperative Programs

December 13, 2017

RENEWABLE ENERGY FOR AMERICA PROGRAM - SECTION 9007

- This program is intended to provide a way that small businesses and agricultural producers can contribute towards our National goals of energy reduction/conservation and reducing our dependency on foreign energy sources
- This can be accomplished through a renewable energy system OR an energy efficiency improvement project.

Improve Profits for Your Rural Small Business, Farm or Ranch with REAP

Eligible Technologies			
Energy Efficiency (AUDIT)		Renewable Energy	
	Lighting		Solar
	Heating		Wind
	Cooling		Small Hydroelectric
	Ventilation		Anaerobic Digesters
	Fans		Biomass
	Automated Controls		Geothermal
	Insulation		Wave/Ocean Power

Technologies must be commercially available. R & D projects do not qualify.

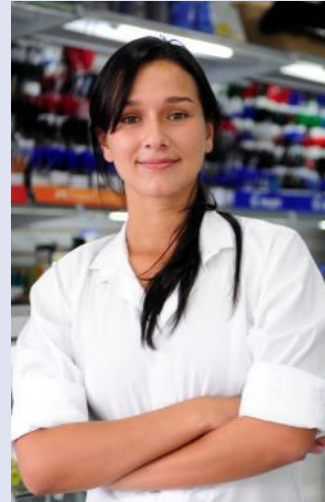
Eligible Applicants

Agricultural Producer



- **Individual or entity that receives 51 percent or more of their gross income from agricultural production** – crops, livestock, aquaculture, forestry operations, nurseries, dairies

Rural Small Business



- **Privately owned for-profit small business** - as defined by the Small Business Administration (SBA)
- **Rural area or non-metro community of $\leq 50,000$**

APPLICANT ELIGIBILITY

- **Must be a citizen of the U.S.**
- **Must not have federal judgments or delinquent federal taxes**
- **Must have a DUNS number**
- **Must have a SAMs registration**
- **Applicant must own the system and control the operation and maintenance of the project**
- **Applicant must show adequate revenues for Operation & Maintenance**

The image shows a screenshot of the SAM (System for Award Management) website. At the top left is the SAM logo with the text 'SYSTEM FOR AWARD MANAGEMENT'. To the right is a login form with fields for 'USER NAME' and 'PASSWORD', a 'LOG IN' button, and links for 'Forgot Username?' and 'Forgot Password?'. Below the login form is a navigation bar with links: HOME, SEARCH RECORDS, DATA ACCESS, GENERAL INFO, and HELP. On the right side of the navigation bar is a dropdown menu for 'United States'. Below the navigation bar is a section for 'D&B' (Dun & Bradstreet) with a logo and links for 'OUR DATA IN SIGHT', 'LEARNING CENTER', and 'ABOUT US'. Below this is another navigation bar with links: BUSINESS CREDIT, SALES & MARKETING, SUPPLY MANAGEMENT, and VIEW ALL PRO. The main content area features a 'CREATE USER ACCOUNT' section with a 'Create User Account' button and a 'REGISTRATION' section. Below this is a 'WHAT IS SAM?' section with a description of the system and links for 'NEWS AND ANNOUNCEMENTS' and 'USER GUIDES/HELP HINTS'. The bottom right of the screenshot shows a large blue banner for 'The D-U-N-S® Number' with the text 'Harness the power of the D-U-N-S® Number. At no cost, you can have this unique, location-specific identifier that allows you to accurately gauge and communicate your company's creditworthiness. As your business grows and changes, your D-U-N-S® Number stays with you.' and a 'View Infographic' button.

Links to DUNS and SAM



Eligible Project Costs

- **Equipment:**
 - Purchase & installation
 - New, refurbished, or remanufactured equipment
- **Post-application construction & facility improvements integral to the renewable energy or energy efficiency project**
- **Professional service fees**
- **Permits & license fees**
- **Retrofitting**
- **Working capital, land acquisition (Guarantee ONLY)**





Ineligible Project Costs

- **Residential energy projects**
- **Equipment:**
 - Farm tillage equipment
 - Used equipment
 - Vehicles
- **Pre-application construction & facility improvements; repairs or operating costs**
- **Application preparation or grant writer fees**
- **Line of credit**
- **Lease payments**
- **Payment to the applicant/business owner, beneficiary, or relative**

REAP Grant Assistance

Up to 25%
of Eligible Project Costs

 Renewable Energy Systems		 Energy Efficiency Improvements	
Minimum Grant Request	\$2,500 Total eligible project costs \geq \$10,000	Minimum Grant Request	\$1,500 Total eligible project costs \geq \$6,000
Maximum Grant Request	\$500,000 Total eligible project costs \geq \$2 million	Maximum Grant Request	\$250,000 Total eligible project costs \geq \$1 million

REAP Guaranteed Loan Assistance

Up to 75%
of Eligible Project Costs

Minimum Loan Amount	\$5,000 Total eligible project costs \geq \$6,667
Maximum Loan Amount	\$25 million Total eligible project costs \geq \$33.4 million
Details	<ul style="list-style-type: none">• USDA guarantees a commercial loan; applicant must have a willing lender.• Terms are negotiated between the lender and borrower.• Fees, appraisals, equity & collateral requirements apply.

How to Apply

- Contact the USDA Rural Development Energy Coordinator in your state for application materials and resources:
http://www.rurdev.usda.gov/BCP_Energy_CoordinatorList.html
- Submit applications any time of year – October 31st and March 31st
- Applications compete for funding based on project score
- Funding selections are made twice per year

Application Forms

- SF 424, SF 424-C and SF 424-D
- RD 4280-3A (\$80,000 or less project cost)
- RD 4280-3B (more than \$80,000 to \$200,000 or less)
- RD 4280-3C (more than \$200,000)
- Energy Assessment or Audit for Energy Efficiency Projects (Audit required for projects >\$80,000)

Application Forms (cont.)

- Feasibility Study by independent 3rd party for RES projects over \$200,000
- AD-3030 for all applicants except sole proprietors
- Matching Funds Documentation (not required but encouraged)
- DUNS # and Cage Code (SAM)

Scoring Criteria

Criteria 1 Sub-Criteria i - Energy Generated or Saved per REAP Grant Dollar Requested – Up to 10 Points maximum

(Energy Generated/Saved in BTU'S / REAP Grant Requested) / 50,000) X 10

Scoring Criteria

Criteria 1, Sub-Criteria ii(a) – Quantity of energy replaced, saved or generated – (RES Replacement) up to 15 points maximum

- Up to 25% - 5 points
- Greater than 25% & less than or equal to 50% -10 points
- Greater than 50% & less than 150% - 15 points
- More than 150% scored as energy generation

Scoring Criteria

Criteria 1, Sub-Criteria ii(b) - For (EEl Energy Saved) – up to 15 points maximum

- 20% to 35% of current usage - 5 points
- Greater than 35% & less than or equal to 50% -10 points
- Greater than 50% - 15 points,

Scoring Criteria

Criteria 1, Sub-Criteria ii(c) - For RES Energy
Generation – 10 points

Scoring Criteria

Criteria 2 - Environmental Benefits- up to 5 points

- Provides benefit to 1 of 3 impact areas – 1 points
- Provides benefit to 2 of 3 impact areas – 3 points
- Provides benefit to 3 of 3 impact areas – 5 points

Scoring Criteria

Criteria 3 - Commitment of Funds - up to 20 points

- Less than 50% - 0 points
- Greater than 50% determined by the formula: $(\% \text{ of documented match above } 50\% / 50\%) \times 20$
- 100% - 20 points

Scoring Criteria

Criteria 4 – Size of Rural Small Business or Agriculture Producer compared to SBA Size Standards – Maximum of 10 points

- 33.33% or less – 10 points
- Over 33.33% to 66.67% - 5 points
- Over 66.67% - 0 points

Scoring Criteria

Criteria 5 – Previous grantees and borrowers -
up to 15 points

- Never received grant or loan – 15 points
- Not received grant or loan with the 2 previous fiscal years - 10 points
- Received grant or loan with the 2 previous fiscal years - 0 points

Scoring Criteria

Criteria 6 – Simple Payback for RES – up to 15 points

- Less than 10 years – 15 points
- 10 to less than 15 years - 10 points
- 15 to 25 years - 5 points

Scoring Criteria

Criteria 6 – Simple Payback for EEI – up to 15 points

- Less than 4 years – 15 points
- 4 to less than 8 years - 10 points
- 8 to 12 years - 5 points

Scoring Criteria

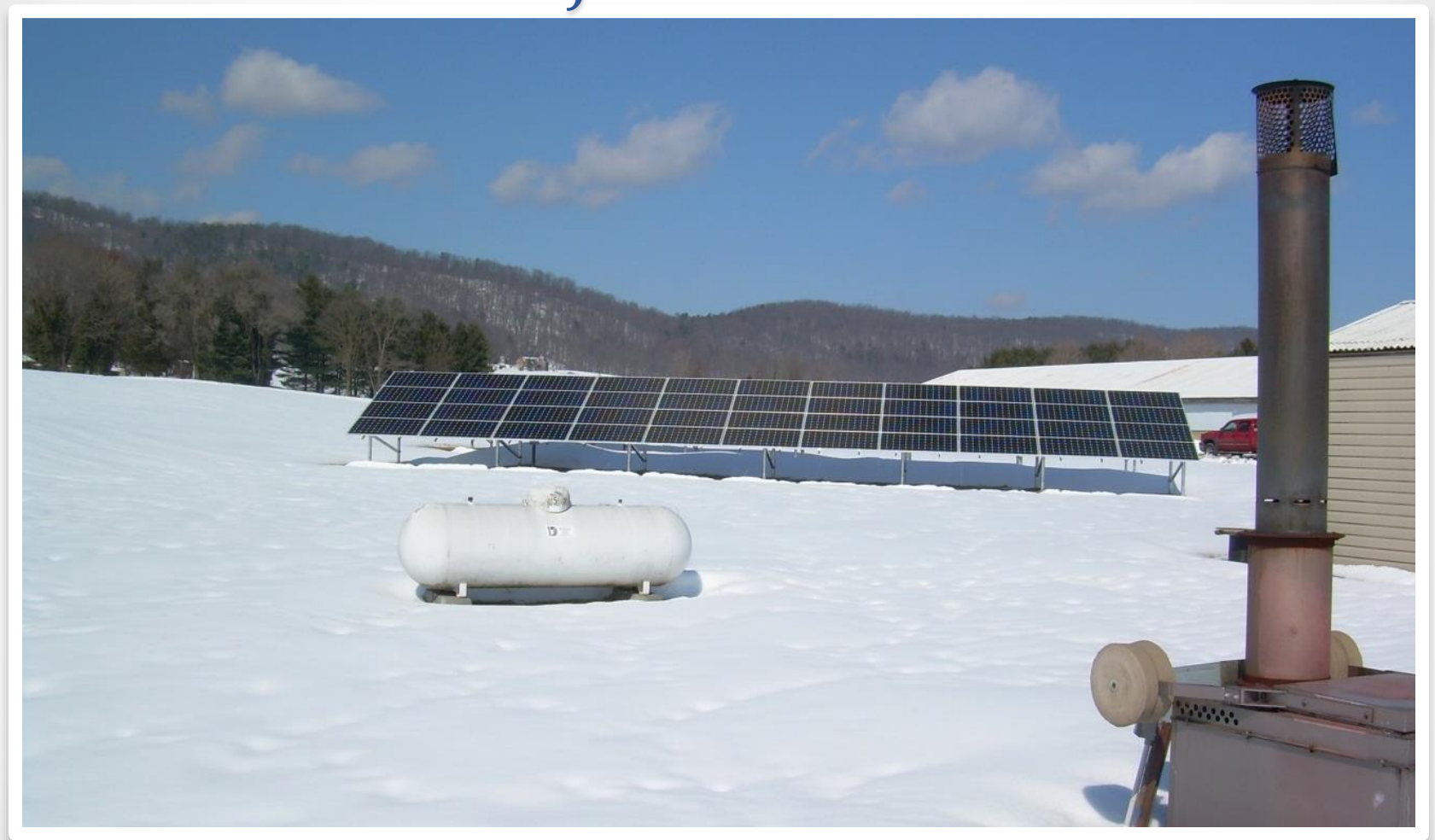
Criteria 7 – State Director and Administrator Points – up to 10 points. A State Director, for its State allocation under this subpart, or the Administrator, for awards from the National Office reserve, may award points if the application is for:

- i.) An under-represented technology,
- ii.) If selecting the application would help achieve geographic diversity,
- iii.) The applicant is a member of an unserved or under-served population,
- iv.) Selecting the application helps further a Presidential Initiative or a Secretary of Agriculture priority,
- v.) The proposed project is located in an impoverished area, has experienced long-term population decline, or loss of employment.

POST AWARD CONDITIONS

- Approved applicants must enter into a grant agreement with USDA Rural Development
- Grantees must adhere to the uses of the grant funds as contained in the application
- The system must be operational for at least 30 days before you can be reimbursed with grant funds
- Must maintain an active SAMs Registration throughout the period of the grant
- Must provide annual reports for 3 years for a renewable energy system and 2 years for an energy efficiency improvement project

Franjilou Farms



**40 kW Ground-Mounted Solar
Mount Crawford, VA**

Shepherds Corner Farm



**12.4 kW Roof-Mounted Solar
Purcellville, VA**

Glebe Farm



**Grain Dryer Replacement
Brandy Station, VA**

Daniel Horning



**Poultry House Replacement
Mount Solon, VA**

In accordance with Federal civil rights law and U.S. Department of Agriculture (USDA) civil rights regulations and policies, the USDA, its Agencies, offices, and employees, and institutions participating in or administering USDA programs are prohibited from discriminating based on race, color, national origin, religion, sex, gender identity (including gender expression), sexual orientation, disability, age, marital status, family/parental status, income derived from a public assistance program, political beliefs, or reprisal or retaliation for prior civil rights activity, in any program or activity conducted or funded by USDA (not all bases apply to all programs).

Remedies and complaint filing deadlines vary by program or incident.

Persons with disabilities who require alternative means of communication for program information (e.g., Braille, large print, audiotope, American Sign Language, etc.) should contact the responsible Agency or USDA's TARGET Center at (202) 720-2600 (voice and TTY) or contact USDA through the Federal Relay Service at (800) 877-8339. Additionally, program information may be made available in languages other than English.

To file a program discrimination complaint, complete the USDA Program Discrimination Complaint Form, AD-3027, found online at http://www.ascr.usda.gov/complaint_filing_cust.html and at any USDA office or write a letter addressed to USDA and provide in the letter all of the information requested in the form. To request a copy of the complaint form, call (866) 632-9992. Submit your completed form or letter to USDA by:

(1) mail: U.S. Department of Agriculture
Office of the Assistant Secretary for Civil Rights
1400 Independence Avenue, SW
Washington, D.C. 20250-9410;

(2) fax: (202) 690-7442; or

(3) email: program.intake@usda.gov.

USDA is an equal opportunity provider, employer, and lender.



United States
Department of
Agriculture

Rural Development



LAURETTE TUCKER
USDA Rural Development
100 Dominion Drive
Farmville, VA 23901
434-392-4906, extension 125
State Office: 804-287-1606
laurette.tucker@va.usda.gov

USDA Rural Development is committed to the future of rural communities.