

Tracking Facility Energy Performance with RETScreen[®] Plus

Longwood University
August 7, 2014

Michael Ross
RER Energy



Monitoring, Targeting, & Reporting (MT&R)

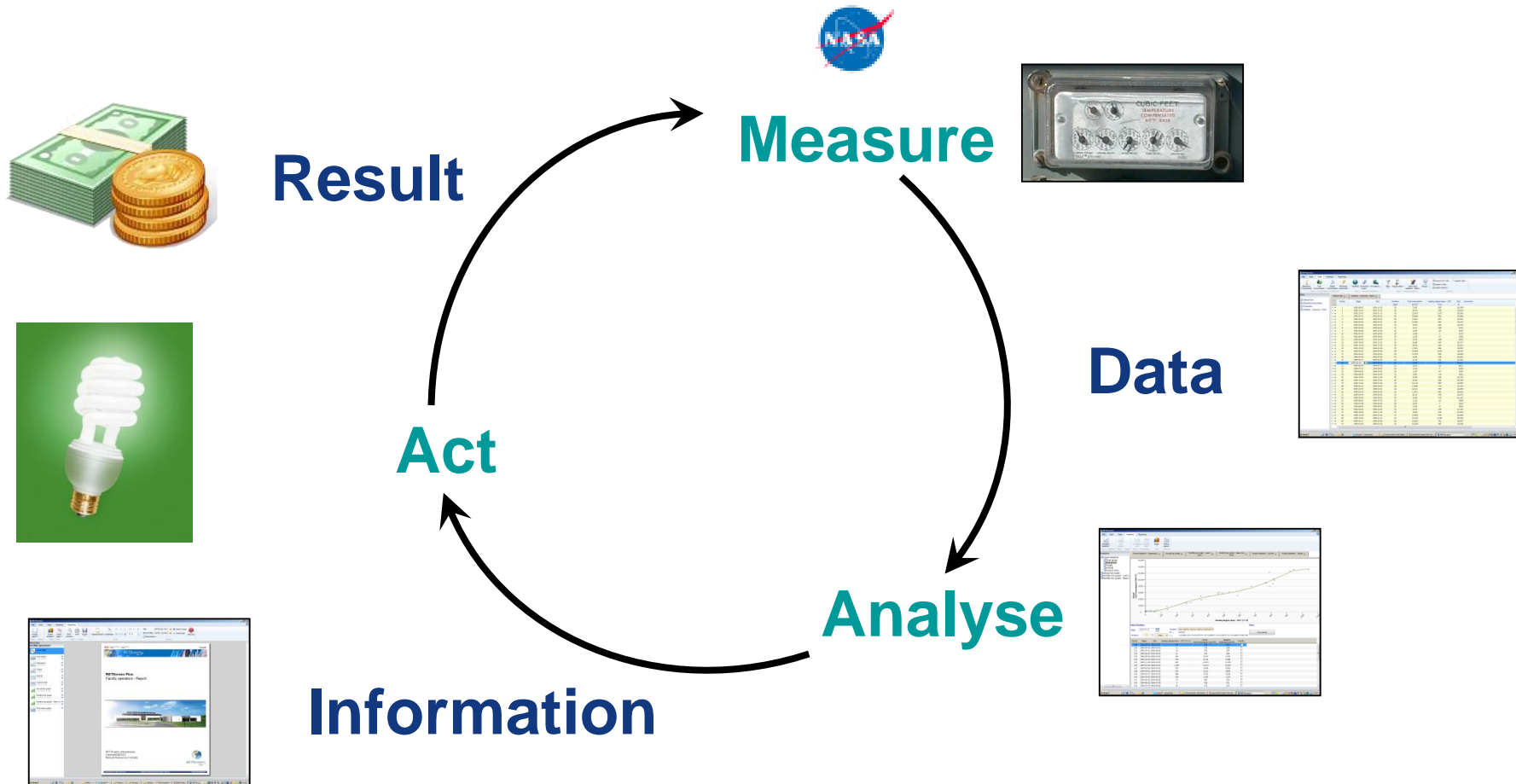
MT&R is a systematic approach to controlling energy consumption (or production) through measurement, analysis and action

Key Steps:

- Measurement of the energy consumption or production over time
- Measurement of influencing factors (weather, production level, occupancy) over corresponding intervals
- Development of a model for the relationship between energy and factors of influence
- Establishment of energy consumption/production targets
- Initiation of actions to attain targets
- Frequent & ongoing comparison of actual consumption/production and targets
- Reporting of discrepancies between targets and actual performance

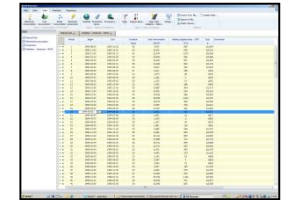


The MT&R Cycle



RETScreen® Plus Performance Analysis Module

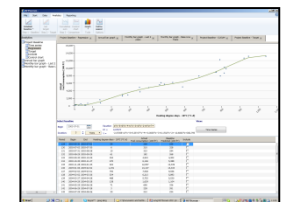
Helps monitor, analyse and report key energy performance data to facility operators, managers, and senior decision makers



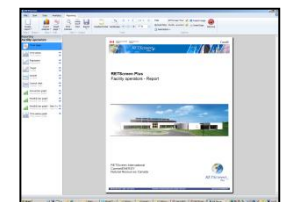
Data

Can be used in different ways:

- Monitoring, targeting and reporting (MT&R)
- Measurement & Verification (M&V)
- As a toolbox for energy tracking



Analytics



Reporting

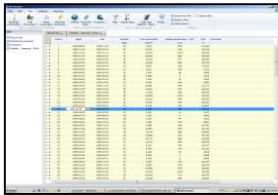
Integrates near real-time NASA satellite-derived weather data for entire surface of planet



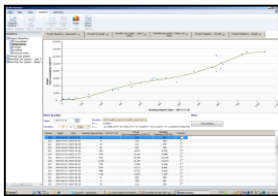
Performance Analysis Module - Structure



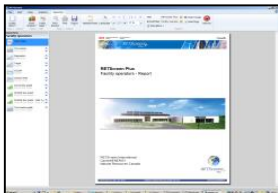
- Start
 - Project information
 - Site reference conditions



- Data
 - Step 1 – Consumption/production
 - Step 2 – Factors of influence
 - Step 3 – Data processing



- Analytics
 - Step 1 – Baseline
 - Step 2 – Target
 - Step 3 – Comparison



- Reporting
 - Step 1 – Report
 - Step 2 – Edit
 - Step 3 – Output



Demonstration: MT&R for office building in Burns Lake, BC

